



RESPONSE To Intervention

Intervention for every student

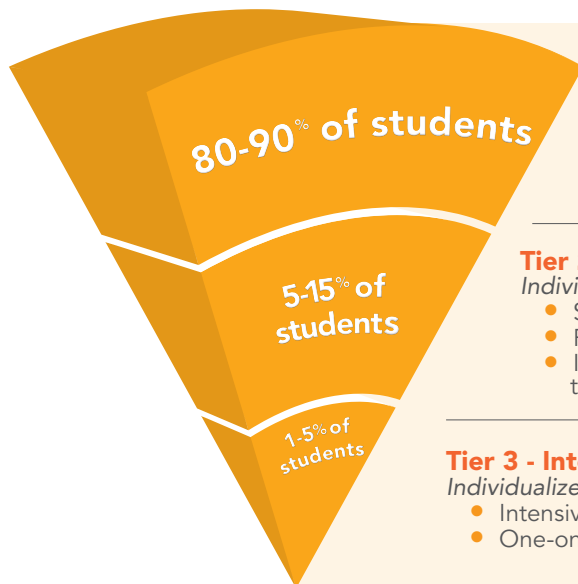
Edmentum provides self-paced, personalized instruction that accommodates the three-tier response to intervention (RTI) model. Edmentum's products offer a variety of instructional tools for RTI programs, including real-time progress monitoring features that support data-driven decision making and curriculum and assessment tools that pinpoint and address student needs. Edmentum's suite of RTI solutions helps educators identify students who are at risk, monitor ongoing progress, plan evidence-based interventions, and adjust those interventions as needed.

The Edmentum difference:

- Proven, research-based content and solutions
- Flexible assessment tools that provide a personalized learning experience
- Real-time reporting that tracks progress and pinpoints areas of weakness so that educators can appropriately and effectively intervene

Ideal for:

- At-risk students
- Students in need of Tier 1, 2, or 3 intervention
- Whole-class, small-group, and intensive individualized support



Tier 1 - Universal Level

Traditional classroom

- High-quality, research-based instruction
- Rigorous, relevant, and standards-driven curriculum

Tier 2 - Targeted Level

Individualized supports for underachieving students

- Standards-based curriculum and supplemental instruction
- Remediation of specific skills or concepts
- Individualized interventions that are differentiated, scaffolded, and targeted to each student

Tier 3 - Intensive Level




Individualized, intensive supports for students with significant underachievement

- Intensive skill-specific interventions
- One-on-one or small-group instruction outside of the traditional classroom

How can you meet the needs of every learner in your classroom?

Grade-level Edmentum Test Packs assessments are given to all students

A Strengths and Needs Report is generated to determine students' levels of proficiency and program needs

| Tier 1 | Tier 2 | Tier 3 |
|--|---|---|
|  <p>Universal Level</p> <p>Reinforce standards mastery with Study Island</p> |  <p>Targeted Level</p> <p>Work on prescriptions from Edmentum Test Packs benchmark scores</p> |  <p>Intensive Level</p> <p>Administer Edmentum Accucess to diagnose intensive skill gaps and automate prescriptions</p> |



- Data-driven standards mastery solution built to your state's standards to improve performance in core skill areas
- Ideal for self-paced learning or whole-class instruction for grades K–12
- Provides automatic remediation and real-time progress monitoring and reporting

Edmentum™ Assessments

- Diagnostic and formative assessments designed to help identify each student's unique needs
- Edmentum Test Packs Prescriptions: Fixed benchmark assessments that target areas of need with grade-level individualized prescriptions
- Edmentum Accucess: Adaptive, diagnostic assessments that efficiently place your students at their skill level in reading, writing, and math

Use real-time data to enhance your instructional decisions

Both Study Island and Edmentum Assessments offer real-time reporting to support a truly data-driven instructional experience. Reporting is available to identify the strengths and needs of your student population, as well as the growth of individual students.

Contact us today for more information.
www.edmentum.com - 800.447.5286



edmentum.com
800.447.5286
info@edmentum.com
0628-25 040816

5600 West 83rd Street
Suite 300, 8200 Tower
Bloomington, MN 55437

© 2016 EDMENTUM, INC.