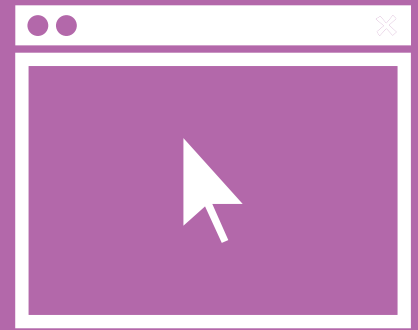


BLEND

traditional instruction
with technology



We understand that, as an educator, one of your biggest challenges is finding new ways to improve student achievement and simultaneously engage and motivate students. At their core, blended learning models are designed to help schools implement technology into the learning environment and personalize learning experiences for each student.

Fuse traditional instruction with technology by integrating online solutions that:

- Are highly flexible to meet the needs of each unique learner, educator, and implementation
- Incorporate rigorous instruction and practice through an engaging online format
- Include actionable, high-quality data
- Allow students to move forward at their own pace
- Include research-based content and assessments based on the most up-to-date standards

We found that our suite of Edmentum products provided a continuum of education tools and activities that meet the needs of learning at every stage of [the students'] academic development.

—George Chapp
Director of Curriculum & Instruction
Southfield Public Schools, MI

Your blended learning partner

We designed a four-step approach to ensure that you implement the right blended learning strategy based on your school's or district's needs, goals, and structure.

1. Program Needs Analysis

Review blended learning strategies and best practices

2. Program Design & Planning

Build a customized implementation plan based on your program's goals

3. Implementation & Onboarding

Tailor onboarding process to meet the specific needs of your educators

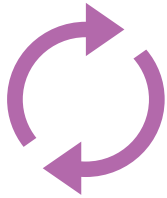
4. Professional Development

Continuous support focused on preparing and sustaining a blended classroom

Customizable solutions for your unique learning environment

Ignite your students' love of learning

Your students' learning experiences should be designed around their individual needs and learning styles. Blended learning can help you create an engaging educational space that is designed to ensure more meaningful interactions with your students.



Rotation Model

Students rotate on a fixed schedule between learning modalities — combination of online (self-paced) and participating in class with a teacher face to face.*



Flex Model

Students move on individually customized, fluid schedules — most curricula is delivered online. Face-to-face teachers provide support and instruction as needed.*



A La Carte Model

Students take one or more courses entirely online and still continue to have brick-and-mortar educational experiences at the same time.*



Enriched Virtual Model

All of the curricula is delivered online in a virtual setting. Students work remotely and face-to-face check-ins occur occasionally.*

Implementation Examples

- Teacher guides students through a tutorial on the interactive whiteboard

- Students work on lesson activities collaboratively in groups

- Students take mastery tests on their individual devices

- Students study an online tutorial independently in a private study classroom

- Teacher meets with each student to discuss his or her progress

- Students take mastery tests on their individual devices

- Students work on electives from their homes

- Students complete their core courses in a traditional classroom

- Students and teachers communicate in person and through email and online activities

- Students meet as a class to kick off a course

- Students complete the rest of the lessons from their homes

- Students have the opportunity to work in a classroom if they choose or need assistance

Contact us today for more information.
www.edmentum.com - 800.447.5286