



2020 Course Guide Grades 1-12

Elementary Courses intended for Grades 1-5 (ages 6-11)

Middle & High School Courses intended for grades 6-12 (ages 12-21)

Courses are available in 50+ different languages

Most student courses have adult versions for educators and parents/guardians

All content is built upon research and evidence-based practices

Based on Multi-Tiered System of Support (MTSS) and Positive Behavioral Intervention & Supports (PBIS) best practices

All courses may be assigned as Tier 1, 2, or 3*

Courses are designed to be paired to wrap around all facets of students' needs

Students and adults may complete courses based on interest, preference, prevention or intervention needs.

*Tier 1, 2, 3 references: Multi-Tiered System of Support (MTSS)

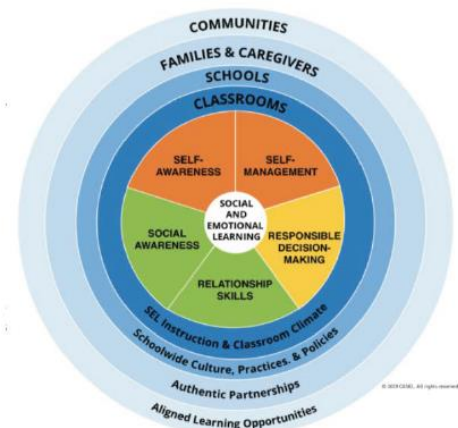
BASE EDUCATION COURSES	ALIGNMENT TO CASEL
Grades 3-5	
Bullying and Cyber Bullying	●●●●●
Digital Safety	●●●●●
Who Am I?	●●●●●
Grades 6-12	
Adrenaline	●●●●●
Anger Management	●●●●●
Anxiety	●●●●●
Avoiding Exploitation (Human Trafficking) (Supported by iEmpathize)	●●●●●
All or Nothing Thinking	●●●●●
Bullying/Cyber Bullying	●●●●●
Character Traits	●●●●●
Coping Strategies	●●●●●
Cultural Implications Within Family and Learned Behavior	●●●●●
Depression	●●●●●
Digital Citizenship	●●●●●
Future Goals	●●●●●
Getting to Know You (Supported by PALS4Ed)	●●●●●
Healthy Communication	●●●●●
Impulsive Decision-Making	●●●●●
Irrational Thinking	●●●●●
Learned Helplessness	●●●●●
Motivation	●●●●●
Primary & Secondary Impacts of Behavior	●●●●●
Putting it all Together	●●●●●
Raising Awareness About Opioid Addiction (Co-created by the FBI and DEA)	●●●●●
Refocus	●●●●●
Learning How to Say "No Thanks"	●●●●●
Restorative Practices	●●●●●
Self-Esteem	●●●●●
Strategies for Successful Return to School	●●●●●
Substance Abuse Series (39 Sections):	
(Developed in accordance with FBI/DEA and Act on Drugs)	●●●●●
Introduction and Disclosure	●●●●●
Pre-Course Knowledge Test	●●●●●
Prescription Drugs	●●●●●
Cigarettes & Alcohol	●●●●●
Absorption of Drugs	●●●●●
Mixing Drugs	●●●●●
Overdose	●●●●●
Methamphetamine	●●●●●
Hallucinogens and Dissociative Drugs	●●●●●
MDMA/Ecstasy	●●●●●
The Cycle of Abuse	●●●●●
Drugs and the Brain	●●●●●
Moods and Drugs	●●●●●
Friends and Drugs	●●●●●
Refusal, Coping, and Withdrawal	●●●●●
Vision of Self	●●●●●
Healthy Relationships	●●●●●
Truancy (Approved by the National Center for School Engagement Practices)	●●●●●
LGBTQIA	●●●●●

PROFESSIONAL DEVELOPMENT	ALIGNMENT TO CASEL
Suicide Education & Prevention for Educators	●●●●●
SEL and You: A Personalized Guide for Successful SEL Integration	●●●●●
ELEMENTARY MODULES - VIDEOS & ACTIVITIES (Coming Soon)	
Grades 1-5	
Anger	●●●●●
Bullying and Cyberbullying	●●●●●
Coping Strategies	●●●●●
Digital Safety	●●●●●
Empathy	●●●●●
Equity	●●●●●
Healthy Communication	●●●●●
Healthy Relationships	●●●●●
Respect	●●●●●
Self-Esteem	●●●●●
Self-Regulation	●●●●●
Who Am I?	●●●●●

NEW RELEASES	ALIGNMENT TO CASEL
Grades 6-12	
Anxiety	●●●●●
COVID-19	●●●●●
Equity	●●●●●
Suicide Prevention and Education	●●●●●
Stress Management	●●●●●
Vaping and JUULING	●●●●●

Core SEL Competencies

Collaborative for Academic, Social, and Emotional Learning (CASEL) is the nation's leading organization advancing the development of academic, social, and emotional competencies when teaching SEL BASE Education courses align with the CASEL core competencies.



- Relationship Skills
- Social Awareness
- Self-Awareness
- Self-Management
- Responsible Decision Making

